



Star of the week – 6th January 2017

Panthers	Farren Plastow
Penguins	Harry Roper
Dolphins	Lily-Boo Backhouse
Giraffes	Aleksander Stempkowski
Pandas	Billie Rendal
Koalas	Macey Rhodes
Toucans	Jayden O'Neil-Griffith
Zebras	Tilly Firth
Tigers	Harriet Whittingham
Hippos	Oliver Law

Class Attendance

Panthers	94.8%
Penguins	97.6%
Dolphins	97.3%
Giraffes	93.5%
Pandas	98.0%
Koalas	95.1%
Toucans	94.2%
Zebras	91.0%
Hippos	97.7%
Tigers	98.1%

Whole School Attendance – 94.8%

TARGET- 96% or above.

Mentions Assembly 2.20 – 2.45pm

Afterwards join your child's class

for Golden Time activities 2.45 -3.30pm

Friday 20 th January	Mrs Bentham, Mrs Wild
Friday 27 th January	Miss Chapman, Miss Stone
Friday 3 rd February	Miss Alderson, Ms Brooks



"SPACE DAY"

Out of this world themed dinner.

We are going to have a special "Space Day" themed dinner on Thursday 19th January 2017.

The menu will be as follows:

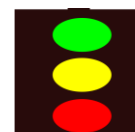
Sausage Space Ships (Yorkshire Puddings)

Crater Cake & Chocolate Sauce

Flying Saucer Pizza (v)

Intergalactic Jelly & Ice Cream

If your child is on Packed Lunches and would like a school dinner on this day please send £2.05 for the cost of the meal. **There will be no cost for Upper Foundation and KS1 children for this meal.**



Keep up your New Year's Resolutions!

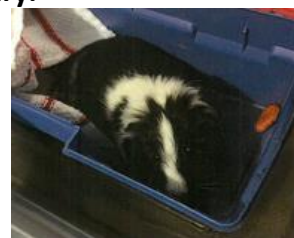
Our whole school New Year's Resolution was to keep our attitude and behaviour **Green**. Last week we only had 10 children in the whole of school with lost Golden Time! This is a fantastic start. Please ask your child about their achievements. Let's keep up this wonderful start. Thank you for your support.



Robinwood Residential Parents Meeting

Tuesday 17th January 8.10am

We will be holding a parents meeting in our school hall on Tuesday 17th January at 8.10am. This is a very informative meeting where parents will need to complete a medical form for their child. Any outstanding payment should be paid by 31st January.



Guinea Pig Found

A long haired black and white guinea pig has been found on Dodworth Drive by a parent. If you know anyone who has lost a pet guinea pig please could they contact 075322 68715 to claim him or her.



Severe Nut Allergy

We now have a child who attends our school who has a severe nut allergy. Could we ask that any nuts or nut products are not sent to school in your child's lunchbox. Thank you for your on-going support.